



TCI Stock Color Card

To Order: 800.533.9067 • 229.937.5411 • For More Information: www.tcipowder.com

TCI Product Series

1000 Series Low Cure Systems

Formulated for heat sensitive substrates, these products were developed to cure at 250° F. Lower temperatures are also possible. Powder can be applied with or without minimal substrate preheating. Products in this series will rapidly lose gloss and chalk with exterior exposure and are best suited for interior applications. These products feature excellent physical and chemical resistance properties. Typical uses include medium density fiberboard (MDF), fiber reinforced plastic (FRP), and sheet molding compounds (SMC). Each customer's substrate and application technology must be evaluated before ordering powder.

2000 Series Acrylic Systems

These products have a broad formulating range and are capable of meeting many decorative application requirements. Products in this series can have increased hardness, chemical resistance, overbake resistance, and weatherability when compared to standard systems. Products can be formulated for interior and exterior applications. Contact a TCI sales representative or chemist to determine suitability of this technology.

3000 Series High Temperature Systems

Formulated to provide coating stability in elevated temperature applications, these products are suitable for different levels of continuous or intermittent temperature exposure. Contact a TCI chemist to initiate a product design for high temperature applications.

4000 Series Specialty Systems

With a broad formulating range, these products are utilized to meet unusually demanding requirements of decorative and functional applications. This series is recommended when conventional formulas will not meet a customer's performance specifications. Contact a TCI chemist to initiate a product design for challenging applications.

5000 Series Alternative Cure Polyester Systems

Formulated to meet many decorative requirements for gloss, smoothness, color and weatherability, these products can provide solutions where TGIC or urethane polyesters are not approved. Typical uses include interior and exterior furniture, sports equipment, and machinery.



Selecting the Right Product

Property	1000	2000	3000	4000	5000	6000	7000	8000	9000	10000	11000
Hardness	E	E	G	VG-E	VG	VG	E	G	VG	VG	VG
Flexibility	E	P	G	VG	E	E	E	E	E	E	E
Overbake Stability	P	E	E	VG	E	VG	P	G	E	VG	VG
Exterior Durability	P-E	P-E	P-E	P-E	E	P	P	E	E	S	HP
Corrosion Protection	E	VG	G	E	VG	VG	E	VG	E	E	E
Chemical Resistance	E	E	G	VG	VG	VG	E	G	VG	VG	VG
Application Properties	VG	G	G	VG	VG	E	E	G	E	VG	VG
P = Poor G = Good VG = Very Good E = Excellent S = Superior (AAMA 2604) HP = Highest Performance (AAMA 2605)											

Interior Applications - 1000, 2000, 3000, 4000, 6000, 7000
 Exterior Applications - 2000, 3000, 4000, 5000, 8000, 9000, 10000, 11000

6000 Series Epoxy/Polyester Hybrid Systems

These products have a broad formulating range that can meet many decorative and functional application requirements. Yet, they can rapidly lose gloss and begin to chalk when exposed to sunlight, making them best suited for interior applications. This series has a good balance of physical properties and excellent application characteristics. Typical uses include automotive accessories, exercise equipment, power tools, and display racks.

7000 Series Epoxy Systems

Products in this series are also best suited for interior applications as they can rapidly lose gloss and begin to chalk when exposed to sunlight. Epoxy systems can be formulated to have excellent chemical resistance and physical properties. Typical uses for this product series include automotive underbody, corrosion resistant primers, and material handling components.

8000 Series Urethane Systems

These products meet many decorative requirements for gloss, smoothness, color, and weatherability. They are formulated for use in interior and exterior thin film applications. Most products in this series are not suitable for high film build. Typical applications include lighting fixtures, automotive trim, interior auto components, and interior/exterior furniture.

9000 Series TGIC Polyester Systems

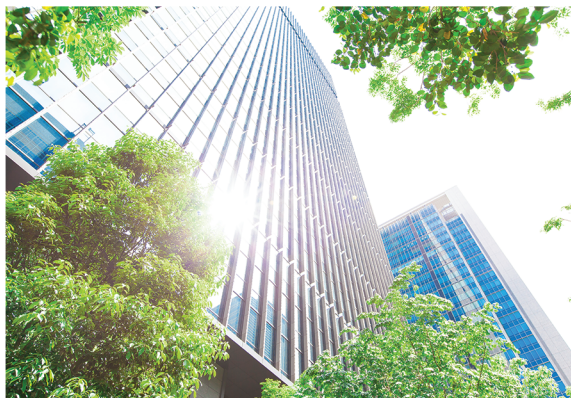
These products have the broadest formulating range in color and gloss, and many will meet or exceed AAMA 2603 performance requirements. Typical uses include aluminum extrusions, playground equipment, agricultural equipment, and machinery.

10000 Series Superior Exterior TGIC Polyester Systems

Products within this series are formulated to meet AAMA 2604 specifications and are available in a wide selection of colors in a medium gloss range. Applications may include windows and doors, playground equipment, cladding components, park furniture, fences and railings, light fixtures and poles, stadium seating, and sports equipment.

11000 Series Highest Exterior Organic Systems

Formulated to meet AAMA 2605 specifications, products in this series have a medium gloss range and are available in many colors. Proper amorphous chromium phosphate or amorphous chromate pretreatment is critical to ensure product performance. A TCI technical representative must audit each application system to ensure products will meet the 2605 specification.



TCI Colors in Stock and Ready to Ship

TCI Powder Coatings stocks hundreds of products available in a variety of colors, textures, and effects ready to ship to you at a moment's notice. Along with the products in this color card, other stock color options include TCI's **TruDurance™** Architectural Powder Coatings, which meet AAMA 2603, 2604 and 2605 specifications, as well as our fast cure, super durable RAL colors.

TCI has developed innovative technology platforms that offer you a complete range of powder coating options designed to give you the performance, quality, and value you expect. Our product portfolio is suitable for those markets that require a durable yet beautiful powder coating finish.

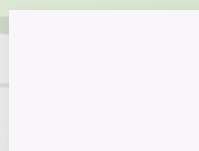
TCI's product lines include **TruBond™** and **TruBond™ Plus** Bonded Metallic Coatings, **Truillusion™** Special Effects Coatings, **TruZinc™** Primer Coatings, as well as **TruDurance™** and **TruAnodize™** Architectural Powder Coatings.

Visit TCI's **Online Color Selector** to get an electronic view of hundreds of colors. Select the color, environment, and finish to find the perfect product for your needs. **Please note that colors in the selector might not be perfectly accurate due to variations of how colors are displayed on computer monitors.*

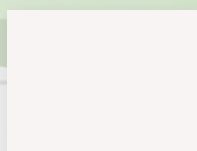
To Order Call: 800.533.9067 • 229. 937.5411
For More Information Visit: www.tcipowder.com


POWDER COATINGS

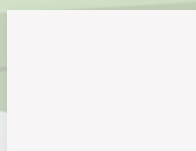
6000 Series Epoxy Polyester Hybrids



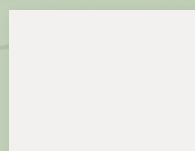
6920-9031
Arctic White



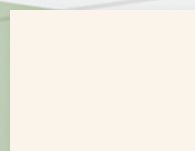
6323-9037
White Peel



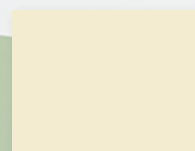
6920-91067
Universal White



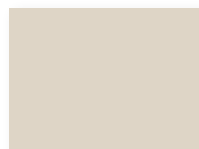
6820-9189
Cabinet White



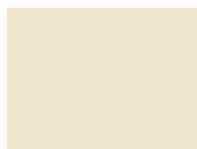
6232-9044
White Tex



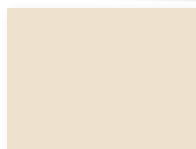
6820-1065
Antique White



6720-90335
Oyster White



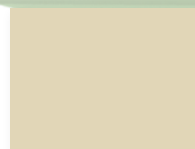
6720-9262
Cabinet Beige



6820-1060
Almond



6132-1056
Almond Tex



6920-1229
Piedmont Almond



6720-1062
Champagne



6550-71817
Lowes Grey 300 II



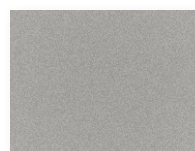
6820-7059
Circuit Grey



6620-7530
RAL 7040 Grey



6720-7050
Mercury Grey



6132-7047
Fog Grey



6820-1147
Brite Yellow



6820-2004
RAL 2004



6820-3063
Fire Red



6820-3044
Winchester Red



6820-5061
Cobalt Blue



6032-9000
Black Tex



6210-9866
Northstar Black

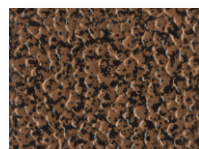


6420-9540
45 Black

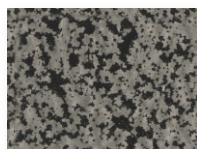


6920-9000
Channel Black

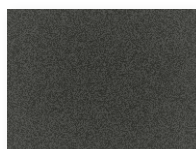
7000 Series Epoxies



7334-0060
Copper Vein



7334-0065
Silver Vein



7002-9291
JA6A Black Texture



7010-9236
JA6AXXJ Flat Black



7010-9000
Flat Black



7027-91831
Black Wrinkle Epoxy



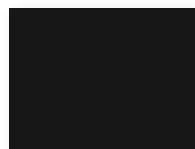
7110-9000
10 Black



7210-9000
Trans Black

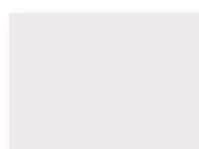


7420-90147
40 Black Epoxy

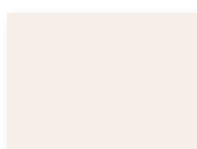


7830-9000
Auto Chassis Black

8000 Series Urethanes



8810-9074
Furniture White



8400-9053
Satin White



8810-7097
Tropic Grey



8300-7087
61 Grey



8810-10577
Goldenrod



8910-3067
Blood Red



8000-9000
Dash Black



8017-91612
DF Black Wrinkle III



8200-9000
Satin Black



8510-9000
Universal Black



8702-9000
JASAXXG



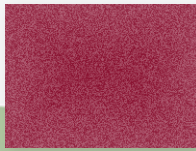
8910-9000
Gloss Black

Tru Colors

Illusions



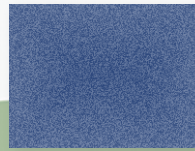
9911-01869R ▲
Truillusion Silver



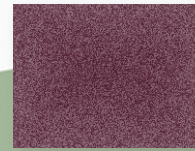
9911-01865R ▲
Truillusion Red



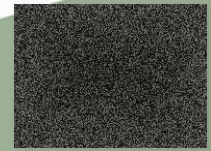
9911-01867R ▲
Truillusion Green



9911-01866R ▲
Truillusion Blue

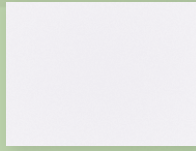


9911-01864R ▲
Truillusion Purple



9911-01871R ▲
Truillusion Black

Wrinkles



8027-92261
Fog White Wrinkle



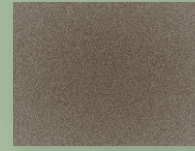
8027-72763
Flint Grey Wrinkle



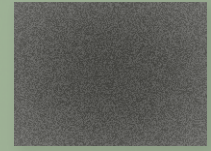
8027-30403
Sunset Red Wrinkle



8027-51311
Surf Blue Wrinkle

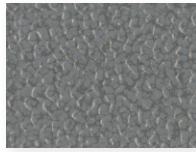


8027-81460
Coffee Brown Wrinkle

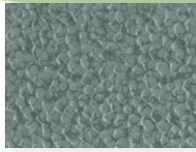


8027-92251
CA Black Wrinkle

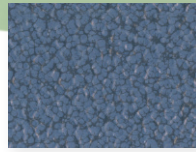
Hammers



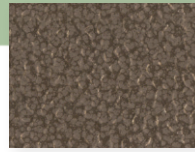
9215-01910
Silver Rock Hammer



9315-61636
Mist Green Hammer



9215-51313
Storm Blue Hammer



9315-01811
Brown Hammer



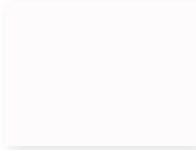
9315-92132
Dark Pewter Hammer

Peels



9313-92513
SD Dixie Black Peel

Eraser



8800-92213
Crystal Eraser White

Tru Anodize

AAMA 2604



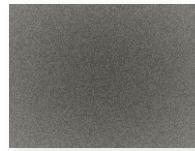
100110-01993
2604 Anodized
Champagne LR



100110-01991
2604 Anodized
Lt. Bronze LR



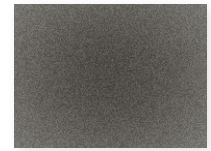
100110-01992
2604 Anodized
Dk. Bronze LR



10010-92370
2604 Anodized
Dk. Bronze DR

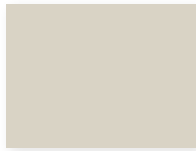


101110-01986
2604 Bonded
Anodized Clear



10010-92369
2604 Anodized
Black

Primers



7820-12396
Beige Primer OGF



7010-71529
Sam Primer Grey



7520-70138
Zinc Rich Primer



8510-7833
HH Grey Primer



7760-3931
LC Red Oxide Primer



8210-91232
HH Black Primer



9920-12085
CNH Power Tan



9920-72188
CNH CE Grey



9910-10503
SD Cat Yellow



9420-91835
CNH Black



9350-91614
FC SD JD Black



9210-90663
SD Cat Black



9840-60728
FC SD JD AG Green



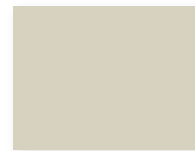
9920-51087
CNH NH Blue



9920-72190
CNH Dark Grey

Ag & Construction

Federal Standards



7820-71737
Epoxy Primer Mil
Spec 53022



8010-10828
Fed Std 33446



8010-60063
Fed Std 34094 Green



8010-91335
Fed Std 37038

9000 Series TGIC Polyesters

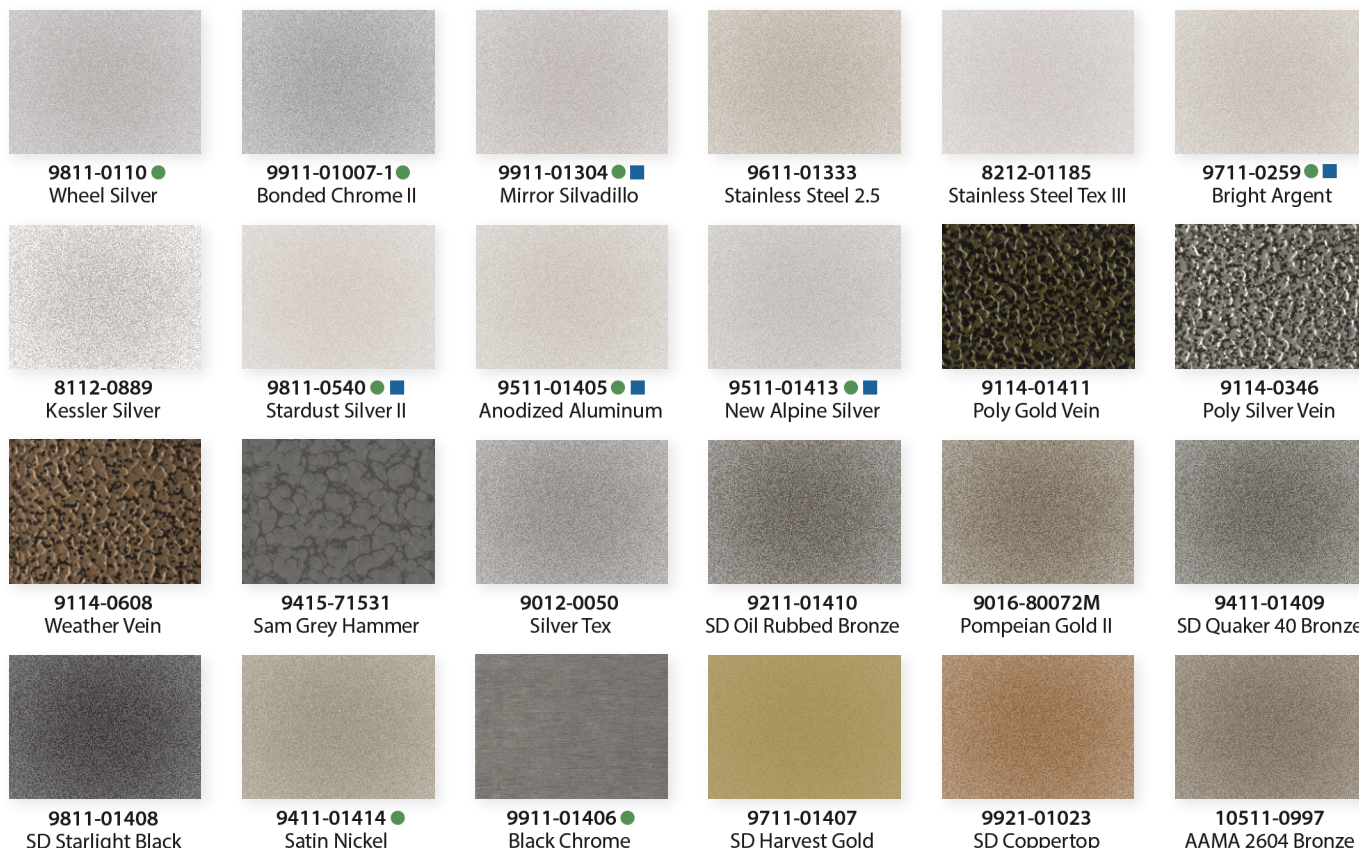
Clears

					
9910-9035 Crystal White	9910-9897 Sky White II	9910-9741 Brite White	9610-9021 Pompano White	9313-9062 Poly White Peel	9910-1045 Pasta
					
9820-12266 Miracle Almond	9810-1048 Sandlewood	9810-1049 Mesa Tan	9810-7042 Elec. Grey/ANSI 70	9510-70039 Super Grey 61	9610-7040 Storm Grey
					
9530-70200 HPC 61 Grey	9900-7111 Win Grey	9820-7146 Accuride Grey	9610-71307 ANSI Grey 49 Poly	9610-73080 SD Array Grey	9810-1070 Golden Yellow
					
9810-1268 Safety Yellow	9810-2113 Sonny Orange II	9840-2461R ▲ Safety Orange	9910-2352 October Orange	9810-3042 Ruby Red	9910-3921 Chili Pepper
					
9810-6046 Ivy Green	9910-5067 Azure Blue	9810-5413 Bahama Blue	9910-5054 Ocean Blue	9910-8036 Dark Sienna	9611-01069 SD Statuary Bronze
					
9002-9324 JA6A Tex Polyester	9030-90922 SD Flat Black	9243-91713 LC Poly Black Peel	9350-91411 FC Matte Black	9510-91039 SD Mineral Black	9012-9000 Tex Black
					
9042-90137 LC Black Tex	9310-90160G SD Black Polyester	9310-90278 Satin Black Polyester	9313-9000 Poly Black Peel	9330-90775 LC Poly Satin Black	9510-92337 Echo Black
					
9510-91410 Lava Black	9710-9000 Cargo Black	9740-90637 Super Slip Black II	9910-9845 SD Accuride Black II	9910-9000 Shuttle Black	9910-9845HF HF SD Accuride Black II

8910-0231 ■ Anti-Graffiti 90 Clear	9310-01308 ■ SD 40 Clear	9910-0000 ■ 90 Clear	9950-9897 FC Sky White II	6950-9000 FC Channel Black	9950-9000 FC Shuttle Black
9030-01311 ■ SD 10 Clear	9710-01307 ■ SD 70 Clear	9910-01289 ■ SD 90 Clear	9540-91709 FC Lava Black II	9550-9000 FC SD Lava Black	9940-30293 FC SD Red Baron

Fast Cures

Metallics



Product Formulation

First Number = Resin Type

9801-1000 (example)

- | | |
|----------------------|----------------|
| 1 = Low Cure | 7 = Epoxy |
| 2 = Acrylic | 8 = Urethane |
| 3 = High Temperature | 9 = TGIC |
| 4 = Specialty | 10 = AAMA 2604 |
| 5 = Alt. Cure | 11 = AAMA 2605 |
| 6 = Hybrids | |

Second Number = 60° Gloss Reading

9801-1000 (example)

- | | |
|-----------|-----------|
| 0 = 0-9 | 5 = 50-59 |
| 1 = 10-19 | 6 = 60-69 |
| 2 = 20-29 | 7 = 70-79 |
| 3 = 30-39 | 8 = 80-89 |
| 4 = 40-49 | 9 = 90+ |

Third Number = Cure Response

9801-1000 (example) Time at metal temp for full cure

- | | |
|----------------------|-------------------------|
| 0 = 12 min. @ 400° F | 5 = 10 min. @ 300° F |
| 1 = 10 min. @ 400° F | 6 = 10 min. @ 275° F |
| 2 = 10 min. @ 375° F | 7 = 10 min. @ 250° F |
| 3 = 10 min. @ 350° F | 8 = Fast Cure - See TDS |
| 4 = 10 min. @ 325° F | for recommended cure |

Fourth Number = Surface Appearance

9801-1000 (example)

- | | |
|-----------------|-----------------|
| 0 = Smooth | 4 = Vein |
| 1 = Metallic | 5 = Hammertone |
| 2 = Sand | 6 = Multi-Color |
| 3 = Orange Peel | 7 = Wrinkle |

Last Series Corresponds to RAL Color System

9801-1000 (example)

- | | |
|---------------------------|------------------------|
| 0000 = Clears & Metallics | 5000 = Blues |
| 1000 = Yellows & Beiges | 6000 = Greens |
| 2000 = Oranges | 7000 = Grays |
| 3000 = Reds | 8000 = Browns |
| 4000 = Violets | 9000 = Blacks & Whites |

Clear Coat and Fill Quantities

- = Clear Coat Recommended for Maximum Durability
- = 45lb Fill Quantity
- ▲ = 25lb Fill Quantity

Shipped in 55lb Boxes Unless Otherwise Noted

To Order Call: 800.533.9067 • 229.937.5411

For More Information & SDS/TDS Visit www.tcipowder.com



North American Locations



- ★ Americus, GA - Corporate Headquarters & Product Development
- ★ Ellaville, GA - Manufacturing
- ★ Burlington, Canada - Development & Manufacturing
- ★ Jacksonville, FL - Product Research Center

WAREHOUSES

- | | |
|------------------------|----------------------|
| ★ Baltimore, MD | ★ Melvindale, MI |
| ★ Burlington, Canada | ★ Mogadore, OH |
| ★ Carrollton, TX | ★ Monterrey, Mexico |
| ★ City of Industry, CA | ★ Nixa, MO |
| ★ Ellaville, GA | ★ Paragould, AR |
| ★ El Paso, TX | ★ Phoenix, AZ |
| ★ Indianapolis, IN | ★ Salt Lake City, UT |
| ★ Itasca, IL | |

TCI Powder Coatings is a proud subsidiary of RPM International Inc. RPM is a multinational holding company, founded in 1947, with an entrepreneurial operating philosophy structured into subsidiaries. These subsidiaries manufacture and market various specialty coating brands and chemical product lines. RPM has 116 manufacturing facilities in 26 countries and employs approximately 13,000 people worldwide.

Through its subsidiaries, RPM is well-diversified across the industrial, consumer, and specialty markets, with 53 percent of sales attributable to the industrial market, 32 percent to the consumer market, and 15 percent to the specialty market. Product lines include high-quality specialty paints and coatings, roofing systems, sealants, and adhesives for the protective, maintenance, and improvement needs of industrial and consumer markets.

As RPM and TCI continue to solidify their market share, they are also actively investing in expanding their worldwide presence by leveraging opportunities for international growth. These strategic investments have rapidly increased their involvement in established European Markets as well as emerging economies like India, China, and Latin America. As a result of their commitment to international expansion, RPM Products are now sold in approximately 170 countries.

The Value of
168 The Value of 168 is the corporate philosophy of RPM. This figure, often cited by RPM's founder, Frank C. Sullivan, represents the number of hours in a week. On a deeper level, it serves to remind RPM and its subsidiaries of his belief that they are born with two great gifts: life and time to do something meaningful. The Value of 168 signifies RPM's enduring commitment to fellow employees, subsidiaries, customers, and stockholders.

Specialty Coatings



Consumer Coatings



Industrial Coatings



P.O. Box 13, 734 Dixon Drive, Ellaville, GA 31806 USA
 Phone: 800.533.9067 • Fax: 800.265.0404 • www.tcipowder.com
 TCI Powder Coatings is a subsidiary of RPM International, Inc.