

Metallic Coatings



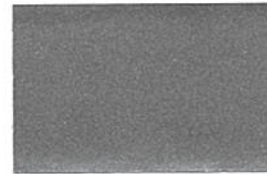
9811-0110
WHEEL SILVER 



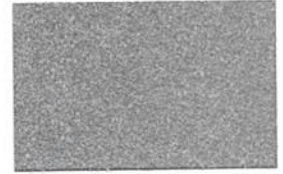
9911-01007
CHROME II 



9911-01304
MIRROR SILVADILLO 



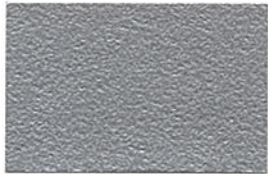
9611-01333
STAINLESS STEEL 2.5



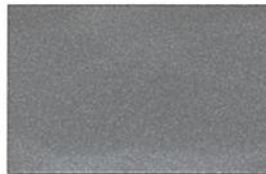
8212-01185
STAINLESS STEEL TEX III



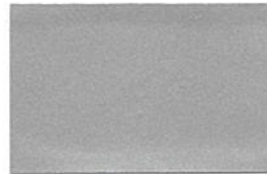
9711-0259
BRIGHT
ARGENT METALLIC



8112-0889
KESSLER SILVER



9811-0540
STARDUST SILVER II



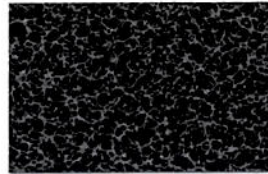
9511-01405
ANODIZED ALUMINUM



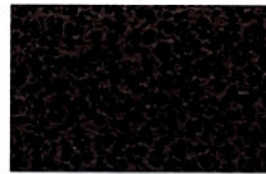
9511-01413
NEW ALPINE SILVER



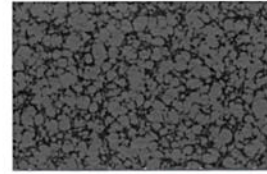
9114-0141
POLY GOLD VEIN



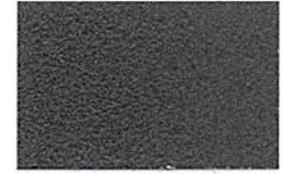
9114-0346
POLY SILVER VEIN



9114-0608
WEATHER VEIN



9415-71531
SAM GREY HAMMER



9012-0050
SILVER TEX



9211-01410 SD
OIL RUBBED BRONZE 



9016-80072M
POMPEIAN GOLD II



9611-01208
BLONDE GOLD



9411-01409
QUAKER-40 BRONZE



9811-01408
SD STARLIGHT BLACK 



9411-01414
SATIN NICKEL



9911-01406
BLACK CHROME 



9711-01407 SD
HARVEST GOLD MET 



9921-01023
SD COPPERTOP 



10511-0997
AAMA 2604 BRONZE 

Legend

All products are standard unless noted.  = Superdurable  = Decorative

Note: Due to printing process slight variations between colors shown here and actual product will exist. Contact TCI for actual samples.


POWDER COATINGS

TCI Certified ISO
9001
2000



Metallic Coatings

Bonding

TCI metallic products contained in this color selection guide are bonded. Bonding is a separate manufacturing step that fuses the metallic and/or mica pigments to the powder particles. This ensures a product that charges and applies evenly and also results in a highly decorative finish that is fully reclaimable.

Notes:

TCI Decorative Finishes:

Products require a clear topcoat for exterior exposure, high humidity, harsh environments, and high wear applications.

TCI Interior / Exterior Finishes:

Depending on the conditions and exposure of the coating, a super durable clear topcoat will increase appearance stability and provide extended durability in exterior and other harsh environments.

TCI Superdurable Finishes:

When applied properly according to the specifications set forth in the product data sheet, these products are formulated to provide excellent weatherability, durability, gloss, and color retention.

Application:

- Curing metallic coatings at elevated temperatures or for prolonged periods can cause metallic discoloration.
- To promote best inter-coat adhesion in two coat systems, cure the basecoat approximately 50%. Apply the clear topcoat and cure according to the topcoat cure schedule.
- Chrome products such as 9911-01007 should be cured approximately 75-85% before topcoating with a clear to prevent migration of metallic pigment into clear topcoat causing discoloration.

